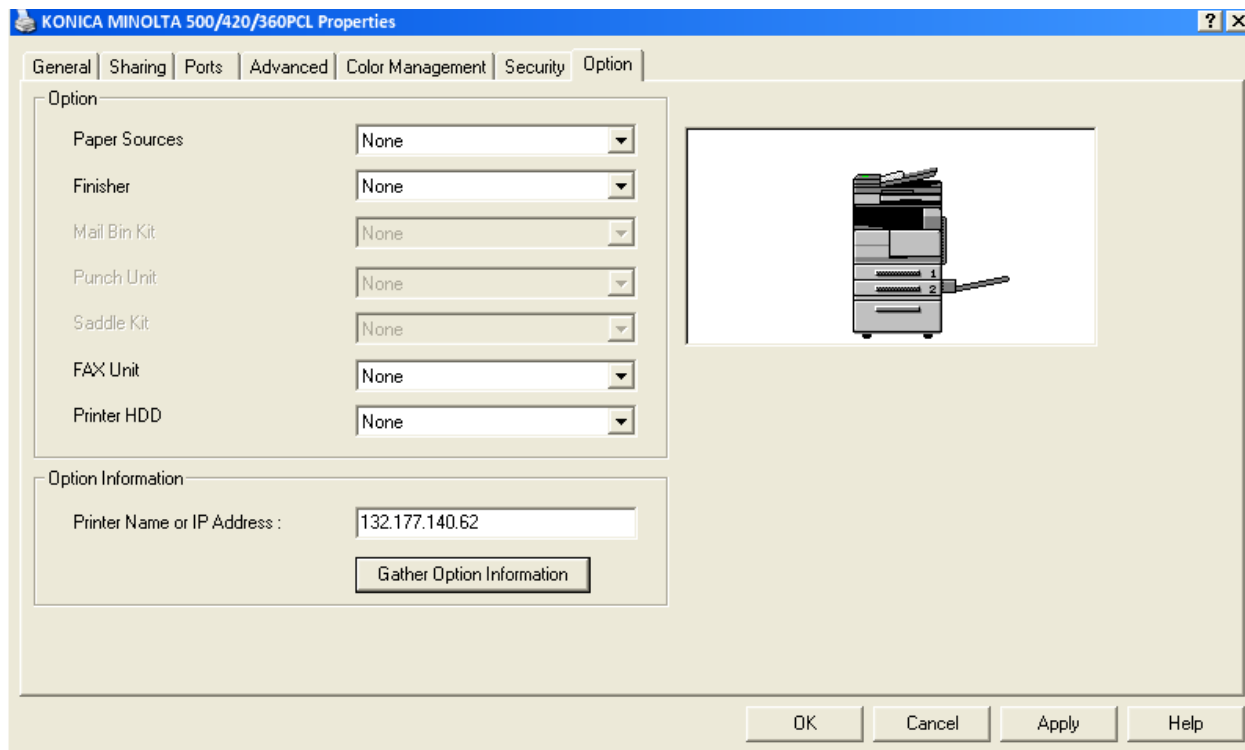


Konica Copier/Printer Instructions

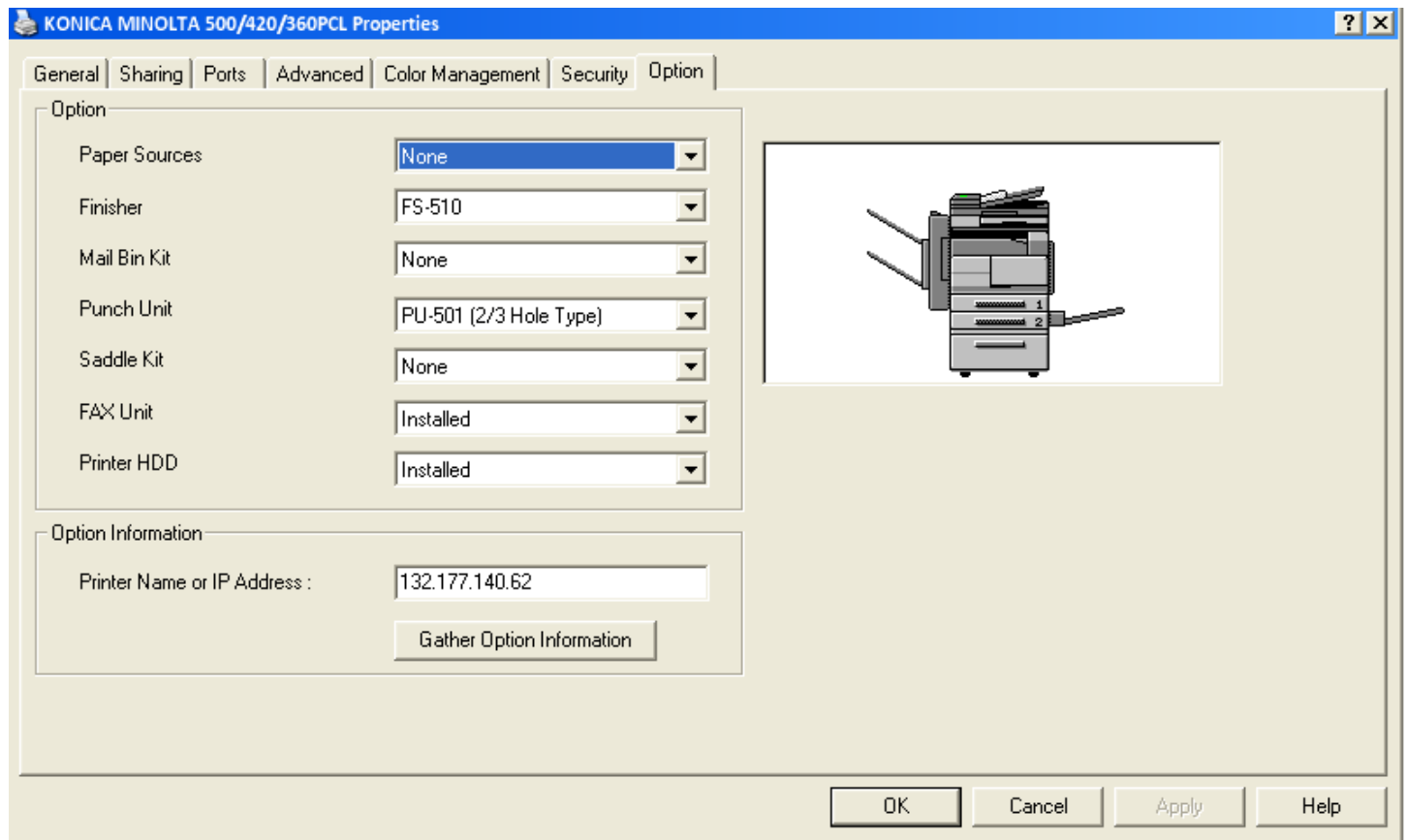
1. Once the printer is installed. Right click on it and go to properties.
2. Select the Option tab
3. Enter the IP address in the Option Information field as shown below unless wireless, if so, see below.



4. Click the Gather Option Information button.
5. Click Yes and OK out.
6. Go to the General tab
7. Click Printing Preferences
8. Under "Binding" select double sided.
9. If you wish, under the Binding area, select the Combination checkbox. This will give you the option to print multiple pages on one sheet. There are also the staple and punch options.

If you are wireless:

You will have to select the options manually



Go to step 5 above and continue.